

FOR OUTDOOR RESIDENTIAL USE ONLY

Not for sale, sale into, distribution and or use in Nassau, Suffolk, Kings, and Queens counties of New York.

FIRST AID

IN CASE OF ACCIDENTAL...	IMMEDIATELY...
If Swallowed:	<ul style="list-style-type: none"> • Call a poison control center or doctor immediately for treatment advice. • Have person sip a glass of water if able to swallow. Do not induce vomiting unless told to do so by a poison control center or doctor.
If In Eyes:	<ul style="list-style-type: none"> • Hold eye open and rinse slowly and gently with water for 15 to 20 minutes. • Remove contact lenses, if present, after the first 5 minutes, then continue rinsing eye. • Call a poison control center or doctor for treatment advice.

NOTE: In case of emergency call CHEMTREC toll free at 1-800-424-9300. When calling poison control center, have this product label accessible. If seeking treatment at an emergency room or doctor's office, bring this product label to show medical personnel.

PRECAUTIONARY STATEMENTS HAZARDS TO HUMANS AND DOMESTIC ANIMALS

CAUTION: Causes moderate eye irritation. Avoid contact with skin, eyes, or clothing. Wash thoroughly with soap and water after handling. Children and pets may re-enter the treated area after it has dried.

Distributed By:
VOLUNTARY PURCHASING GROUP
 230 FM 87
 BONHAM, TX 75418
 Visit Us At: www.fertilome.com
 EPA Reg. No. 42750-155-7401
 EPA Est. No. 7401-TX-1



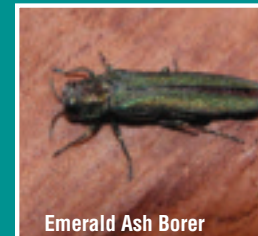
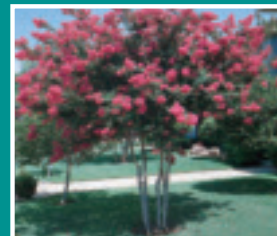
7 32221 10206 4



ferti·lome®



Tree & Shrub **SYSTEMIC** **INSECT DRENCH**



Emerald Ash Borer

- **Protects Trees And Shrubs From Damaging Insects With One Easy Treatment.**
- **One Application Protects Up To 12 Months.**

ACTIVE INGREDIENT:

Imidacloprid, 1-[(6-Chloro-3-pyridinyl)
methyl]-N-nitro-2-imidazolidinimine 1.47%

OTHER INGREDIENTS: 98.53%

TOTAL 100.00%

KEEP OUT OF REACH OF CHILDREN
CAUTION

See Booklet For Additional Ingredients And Precautionary Statements.

NET CONTENTS: ONE QUART (32 FL. OZS.)

ENVIRONMENTAL HAZARDS

- This pesticide is toxic to aquatic invertebrates. Do not apply directly to lakes, streams, rivers or ponds.
- Do not dump rinse water into sewers or other bodies of water.
- Apply this product only as specified on this label.

DIRECTIONS FOR USE

It is a violation of Federal Law to use this product in a manner inconsistent with its labeling. For best results, read and follow all label directions.

BEFORE YOU USE:
Read and
follow directions
when using.

- Do not apply near lakes, streams, rivers, or ponds.
- Do not apply to soils which are water-logged or saturated.
- Bucket or measuring utensils should not be used for any food or drinking water purposes after use with this product.

HOW TO USE:

Determine the amount to use by measuring the distance around the tree trunk or height of the shrub. Pour the required amount into a bucket of water and empty the bucket around the base of the tree/shrub.

FOR USE ON:

Outdoor trees and shrubs including listed fruit and nut trees:

Apple	Loquat	Oriental Pear
Crabapple	Mayhaw	Pear
Pecan	Quince	

CONTROLS:

Adelgids
 Billbug*
 Crane fly larvae*
 Leaf Beetles (including Elm Leaf Beetles and Viburnum
 Leaf Beetles)
 Vine Weevil Larvae (Including Black Vine Weevil)

DIRECTIONS FOR USE *(continued)*

CONTROLS: <i>(continued)</i>	<p> Leafhoppers (including Glassy-winged Sharpshooter) Roundheaded Borers (Including Asian Longhorned Beetle and Eucalyptus Longhorned Borer) Flatheaded (Including Bronze Birch Alder, and Emerald Ash Borers) Leafminers (Including Birch Leafminers) Mealybugs Pine Tip Moth Larvae Japanese Beetles, Adult Psyllids Lacebugs Royal Palm Bugs Sawfly Larvae Scales (Includes Armored Scale [Suppression] and Soft Scale) Thrips Whiteflies *(Except California) </p>
HOW MUCH TO APPLY	<p> Trees: 1 oz. per inch of distance around trunk Shrubs: 3 oz. per foot of height. </p>
	<p> TREE WITH ONE TRUNK: Measure distance (in inches) around tree trunk at chest height. A flexible tape measure is the recommended method [tool]. This is the number of ounces of this product to apply. </p>
	<p> TREES WITH 2 OR MORE TRUNKS: Measure the distance (in inches) around each tree trunk and add together. Multiply this total by 0.75 to get the required number of ounces of this product to apply. </p>

DIRECTIONS FOR USE *(continued)*

HOW MUCH TO APPLY <i>(continued)</i>	<p>Example: A tree has 4 trunks. They measure 20, 10, 5 and 5 [inches] or a total of 40 [inches], $40 \times 0.75 = 30$ ounces.</p>
	<p>SHRUBS: Measure the height of the shrub to the nearest foot. Round any inches down to the nearest foot if less than 6" and up to the nearest foot if greater than 6". Multiply the number of feet by 3 – this is the number of ounces of this product to apply.</p>
	<p>Do not make more than one application per year.</p>
HOW TO APPLY	<ul style="list-style-type: none"> • Fill a bucket or watering can with 1 gallon of water. [For trees with circumference greater than 50', use 2 gallons of water.] • Shake the bottle of ferti•lome® TREE & SHRUB SYSTEMIC INSECT DRENCH well. • Carefully measure required amount of product into bucket. • Slowly pour the solution evenly around the tree. For best results, pour as close to the TRUNK/main stem of the tree/shrub as possible. • Fill the bucket with clean water and pour it around the trunk as well.

DIRECTIONS FOR USE *(continued)*

FOR BEST RESULTS	<p>Use this product as part of an overall tree and shrub health care program before problems start [preferably in the fall]. However, this product can be applied anytime except when the ground is waterlogged or frozen. These conditions inhibit the movement of the product down into the root zone.</p> <p>During prolonged dry periods [spells], water the tree/shrub well the night before making an application.</p> <p>For severe infestations, treat with a foliar insecticide labeled for use on ornamentals then use this product as part of a routine care program.</p>
HOW ferti•lome® TREE & SHRUB SYSTEMIC INSECT DRENCH WORKS	<p>The insecticide dissolved in water moves down through the soil, where it is absorbed by the roots. Once absorbed, it moves up through the tree or shrub providing year-long insect protection. ferti•lome® TREE & SHRUB SYSTEM INSECT DRENCH even moves into new growth after application, thus protecting it, too. To get complete protection, the insecticide must distribute completely through the tree/shrub. Depending on the size and health of the plant, this may take one week to three months (for very large trees). Rain or water cannot wash off this internal protection.</p>

(NOTE: Application to trees heavily infested may not prevent their eventual loss due to existing pest damage and tree stress)

THIS PAGE LEFT BLANK INTENTIONALLY.

IMPORTANT – DIRECTIONS FOR STORAGE AND DISPOSAL

Store in original container in a cool, dry place, out of the reach of children, preferably a locked storage cabinet.

IF EMPTY:	<ul style="list-style-type: none">• Nonrefillable container. Do not reuse this container. Offer for recycling, if available.
------------------	--

IF PARTLY FILLED:	<ul style="list-style-type: none">• Call your local solid waste agency for disposal instructions.• Never place unused product down any indoor or outdoor drain.
--------------------------	--

NOTICE: Research and testing have determined that the “Directions for Use” are appropriate for the proper use of **ferti•lome® TREE & SHRUB SYSTEMIC INSECT DRENCH** under expected conditions. The Buyer assumes responsibility for lack of performance or safety if not used according to the directions.

Distributed By:
VOLUNTARY PURCHASING GROUPS, INC.
230 FM 87
BONHAM, TEXAS 75418
Visit Us At: www.fertilome.com
EPA Reg. No. 42750-155-7401 • EPA Est. No. 7401-TX-001

